

+34 695 577 651

**LW**  
Estates

info@lw-estates.com

Terraced Townhouse in Manilva

Reference: R5408344



Bedrooms: 2

Bathrooms: 2

M<sup>2</sup>: 99

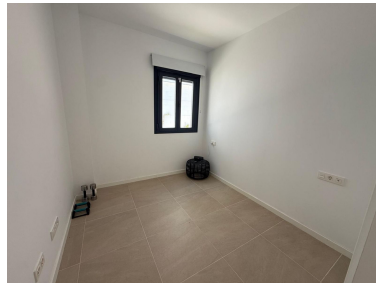
Price: 399,000 €

Status: Sale

Property Type: Terraced  
Townhouse

Parking places: by request

Printing day : 14th June  
2026



---

Overview: Superb corner house located in the BLUE VIEW complex Well new, never lived in. Giving you the possibility to buy new with 7% and not 10% VAT. Open view of the sea. Gibraltar and the mountain. Ease of access from the garage also leading directly to the front door of your home. On foot from the beach and beach bars. 5 minutes from Torreguadiaro and 7 min from the port of Sotogrande. Investment property or to enjoy it with your family, this property only needs to be bought.

---

#### Features:

Pool, Air conditioning, Heating, Sea views, Mountain views, Lift, None, Private garden, Parking, Holiday Home, Investment