

Land in Sotogrande

Reference: R5406502



Bedrooms: by request

Bathrooms: by request

M²: 2,000

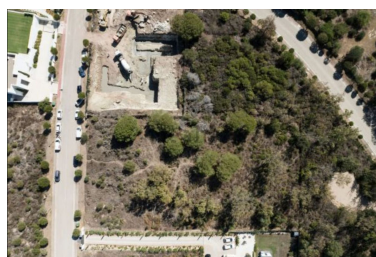
Price: 920,000 €

Status: Sale

Property Type: Land

Parking places: by request

Printing day : 11th June
2026





Overview: Exceptional 2,000 m² plot in one of the most exclusive areas of Sotogrande, with a buildable area of 500 m² and a valid building permit, ready for construction of a luxury villa without any administrative delays. Located in a privileged setting, the property enjoys breathtaking open views of the Mediterranean Sea and the mountains, offering a perfect balance between nature, privacy, and exclusivity. Its excellent location provides easy access in just a few minutes to prestigious golf courses, top-tier international schools, the Sotogrande marina, sports clubs, and a wide range of services and leisure activities. A unique opportunity to develop a high-end residence in one of the most sought-after residential areas in Southern Europe.

Features:

Sea views, Mountain views, Private garden, Investment, Resale