

+34 695 577 651

LW
Estates

info@lw-estates.com

Penthouse in Selwo

Reference: R5362792



Bedrooms: 2

Bathrooms: 2

M²: 114

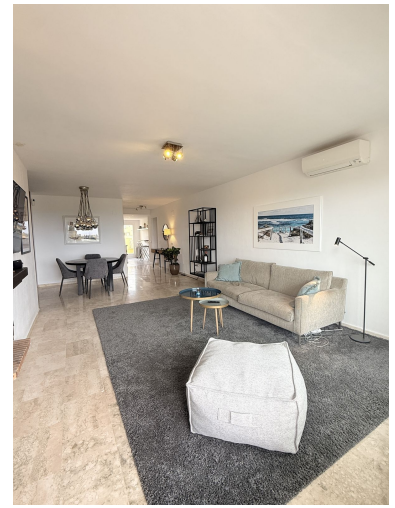
Price: 395,000 €

Status: Sale

Property Type: Penthouse

Parking places: by request

Printing day : 27th April
2026



Overview: Beautiful top-floor, south-facing apartment with uninterrupted sea views that will never be disturbed, located in the popular and peaceful area of Selwo. All within walking distance of new padel courts, a modern gym and spa, a selection of bars and restaurants, and the local golf course, enhancing both lifestyle and rental appeal. This bright and spacious 2-bedroom, 2-bathroom home offers excellent flow throughout, with an open-plan living, dining and kitchen area leading directly onto a front terrace with stunning sea views, perfect for relaxing or entertaining, complete with a seating area and BBQ. To the rear, a secondary terrace is currently used as a utility area, overlooking the well-maintained communal gardens and swimming pool. The property features a generous guest bedroom with beautiful mountain views, served by a family bathroom. The master bedroom is positioned to the front, enjoying en-suite facilities, open sea views, and direct access to the terrace, seamlessly connecting indoor and outdoor living. Set within a well-kept community in a quiet yet convenient location, this apartment is ideal as a full-time residence, holiday home or investment opportunity.

Features:

Pool, Heating, Sea views, Mountain views, None, Private garden, Parking, Resale