

Commercial in Aloha

Reference: R5356435



Bedrooms: by request

Bathrooms: by request

M²: 207

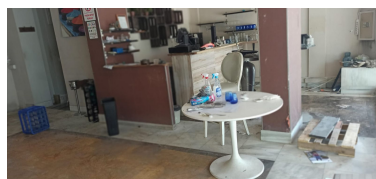
Price: 4,000 €

Status: Sale

Property Type: Commercial

Parking places: by request

Printing day : 1st May 2026



Overview: A spacious commercial premises occupying a highly visible street front position on the Aloha strip. The premises traded until recently as a restaurant and would lend itself well to a similar business. In addition the property is suited to many retail or office type businesses. The upper level offers a good sized display or working area with direct access to a large terrace. On the lower level there is a vast basement area that provides a extensive space for the storage of materials and products for many business types. No traspaso cost.

Features: