

+34 695 577 651

LW
Estates

info@lw-estates.com

Penthouse in New Golden Mile

Reference: R5350126

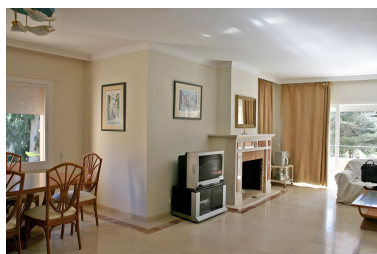


Bedrooms: 4
Status: Sale

Bathrooms: 5
Property Type: Penthouse

M²: 150
Parking places: by request

Price: 1,300,000 €
Printing day : 4th May 2026





Overview:Duplex Penthouse in Venalmar: Beachside Elegance on the New Golden Mile Price: 1,300,000 €
Location: Venalmar, New Golden Mile (Estepona) Experience the ultimate coastal lifestyle in this exceptional duplex penthouse located in Venalmar, one of the most prestigious and secure beachfront communities on the New Golden Mile. Situated literally steps from the sand and neighboring the renowned Salduna Beach restaurant, this property offers a rare combination of space, privacy, and frontline proximity. **The Residence: Sophistication and Versatility** This expansive penthouse is designed for those who value space and flexibility. The main level features bright, open-plan living areas that flow seamlessly onto private terraces, perfect for enjoying the Mediterranean breeze. **4 Double Bedrooms:** Each featuring its own en-suite bathroom for maximum privacy and comfort. **Guest Powder Room:** An additional guest toilet conveniently located for visitors. **The Independent Apartment:** The upper level is a true standout feature—a self-contained independent apartment. This space is ideal for guests, extended family, or as a private master retreat with its own terrace and unique views. **Unbeatable Location** Venalmar is a consolidated gated community known for its lush tropical gardens, impeccable maintenance, and direct access to the beach. **Beachfront Living:** Walk from your door to the shoreline in seconds. **Lifestyle at your doorstep:** Enjoy the sophisticated yet relaxed atmosphere of Salduna Beach for sunset dinners or morning coffee by the sea. **Connectivity:** Perfectly positioned between the glamour of Puerto Banús (10 min) and the authentic charm of Estepona town center (10 min). **Key Features:** Layout: Duplex Penthouse with independent upper-floor unit. **Capacity:** 4 Bedrooms / 4.5 Bathrooms. **Setting:** Beachfront community with swimming pool and manicured gardens. **Investment Potential:** High rental demand due to its location and unique "two-in-one" configuration.

Features:

None, None, Pool, Air conditioning, Heating, Sea views, Private garden, None, Parking, Beachfront