

+34 695 577 651

LW
Estates

info@lw-estates.com

Villa in Atalaya

Reference: R5346616



Bedrooms: 3

Bathrooms: 3

M²: 338

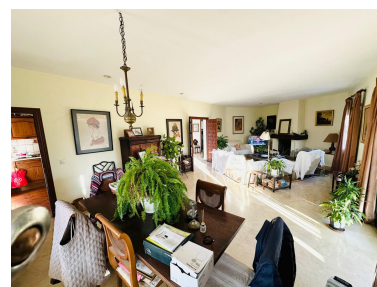
Price: 920,000 €

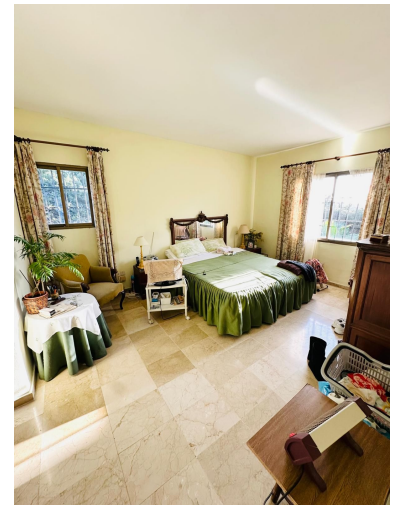
Status: Sale

Property Type: Villa

Parking places: by request

Printing day : 26th April
2026





Overview: Amazing opportunity for investors. 3 bedroom 3 bathroom villa located 5 minutes from Puerto Banus in a very popular Atalaya area. Nestled in an exclusive residential area of Nueva Atalaya just five minutes from Puerto Banús , this 3 bedroom 3 bathroom property offers privacy, and Mediterranean charm. Surrounded by lush greenery and beautifully landscaped gardens, the property provides a serene environment while remaining close to Marbella's vibrant lifestyle. The villa features spacious open-plan living areas filled with natural light, The property includes several generously sized bedrooms. With its prime location near Puerto Banús, renowned golf courses, fine dining restaurants, and golden beaches, this villa represents an exceptional opportunity for both holiday living and permanent residence. This property is located 100 meters from the shops, restaurants, and amenities. This villa presents a rare investment opportunity, offering exceptional potential thanks to its prime location. Although the property requires a renovation, it provides a perfect blank canvas to create a bespoke luxury residence tailored to modern standards. Set in a highly sought-after area, the villa benefits from its proximity to key amenities, beaches, and exclusive lifestyle destinations. The structure features generous interior spaces and a substantial plot, allowing for endless possibilities in redesign, expansion, and landscaping. With the right vision, this property can be transformed into a stunning contemporary home or a high-value investment asset. Its unbeatable location ensures strong future appreciation, making it an ideal project for investors or buyers looking to create a dream home in a prestigious setting.

Features:

None, Mountain views, Private garden, None, Parking, Investment