

+34 695 577 651

LW
Estates

info@lw-estates.com

Apartment in Nueva Andalucía

Reference: R5298523



Bedrooms: 1

Bathrooms: 1

M²: 55

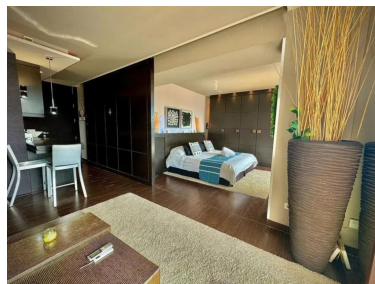
Price: 275,000 €

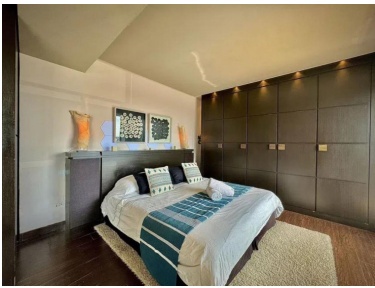
Status: Sale

Property Type: Apartment

Parking places: by request

Printing day : 29th April
2026





Overview: Luxury renovated apartment in Nueva Andalucía – 12th floor with panoramic views ■ Discover this spectacular, completely renovated apartment located in one of Marbella's most sought-after areas, Nueva Andalucía, on the 12th floor offering breathtaking open views of the sea and mountains. The home stands out for its brightness, modern design, and high-quality finishes, ideal as a permanent residence, second home, or investment.

Main features: • 12th floor with panoramic sea and mountain views • Fully renovated apartment • Building with concierge service and 24-hour security • Communal swimming pool and large green areas • Community with all services • Quiet and well-maintained environment

Unbeatable location: • A few minutes from Puerto Banús, beaches, and golf courses • Close to supermarkets, restaurants, schools, and transport • Excellent connection to the center of Marbella and San Pedro

A unique opportunity to live or invest in one of the best areas of the Costa del Sol, combining height, views, comfort, and security. Middle Floor Apartment, Nueva Andalucía, Costa del Sol. 1 Bedroom, 1 Bathroom, Built 55 m², Terrace 10 m². Setting : Close To Shops, Close To Schools, Urbanisation. Orientation : East. Condition : Excellent. Pool : Communal. Climate Control : Air Conditioning, Hot A/C, Cold A/C. Views : Sea, Mountain, Garden. Features : Covered Terrace, Lift, Fitted Wardrobes, Near Transport, Private Terrace, WiFi, Access for people with reduced mobility, 24 Hour Reception, Near Church, Fiber Optic. Furniture : Fully Furnished. Kitchen : Fully Fitted. Garden : Communal. Security : Gated Complex, 24 Hour Security. Parking : Communal. Category : Resale.

Features:

Pool, Air conditioning, Heating, Sea views, Mountain views, Private garden, Lift, None, 24H Security, Parking, Resale