

+34 695 577 651



info@lw-estates.com

---

Penthouse in Sotogrande

Reference: R5138887



Bedrooms: 2

Bathrooms: 1

M<sup>2</sup>: 82

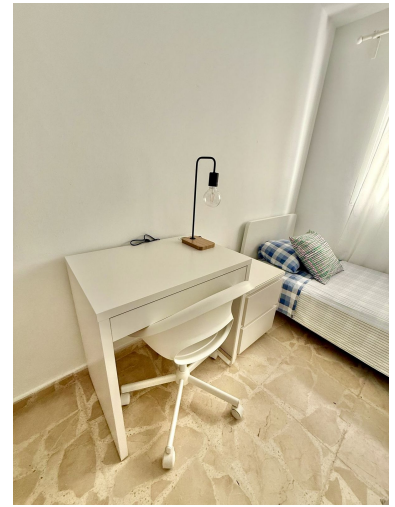
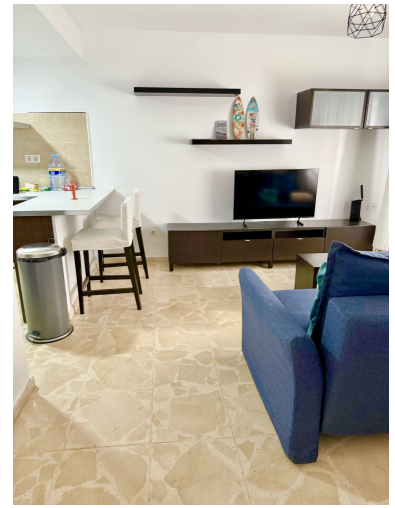
Price: 298,000 €

Status: Sale

Property Type: Penthouse

Parking places: by request

Printing day : 11th June  
2026



---

Overview: Modern 2-bedroom apartment just a 1-minute walk to restaurants, bars, shops, and a supermarket. The bus station is only meters away, and Sotogrande Port is within walking distance. Includes a fully equipped kitchen, bathroom, sofa bed, TV, coffee machine, popcorn maker, and a cozy interior patio.

---

Features: