

+34 695 577 651

**LW**  
Estates

info@lw-estates.com

Apartment in Elviria

Reference: R4994593



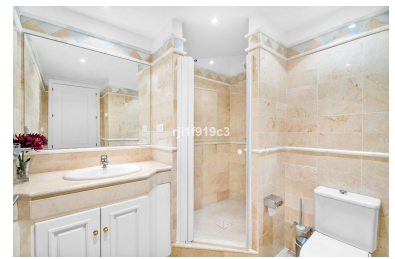
Bedrooms: 2  
Status: Sale

Bathrooms: 2  
Property Type: Apartment

M<sup>2</sup>: 86  
Parking places: by request

Price: 510,000 €  
Printing day : 27th July 2025





---

**Overview:**Stunning 2-Bedroom Apartment with Panoramic Sea Views in Elviria Hills Nestled within the prestigious Elviria Hills complex, this immaculate 2-bedroom apartment offers a truly exceptional lifestyle. Boasting one of the best panoramic sea views in the area, this home combines elegant design, top-quality finishes, and modern conveniences. The apartment is in excellent condition and tastefully furnished, ready for immediate enjoyment. The open-plan layout features a spacious living-dining area that flows seamlessly into a cozy terrace, perfect for relaxing and soaking in the breathtaking views. The terrace is equipped with glass curtains, allowing for year-round enjoyment of the outdoors. The fully fitted kitchen is stylish and functional, ideal for both casual and gourmet cooking. Additional highlights include air conditioning, central heating, underfloor heating in the bathrooms, and marble floors throughout. The property is equipped with an alarm system for added peace of mind, and offers both a parking space and storage for convenience. The beautifully landscaped communal gardens provide a tropical oasis, complete with several swimming pools for residents to enjoy. The complex is surrounded by a 9-hole golf course, tennis courts, a gym, and a driving range, offering an abundance of recreational options. The clubhouse, featuring the renowned El Lago restaurant, overlooks a serene lake – the perfect place to unwind. Located just a short drive from Elviria Beach and adjacent to Greenlife Golf, this apartment offers a blend of tranquility and accessibility. The nearby Elviria Commercial Centre, only five minutes away, provides a wide range of amenities, including shops, bars, restaurants, a supermarket, banks, and more. For families, some of the best schools, including the German School and the English International College, are just 10 minutes away. With Marbella town center just 15 minutes by car, Puerto Banus 20 minutes, and Málaga Airport 40 minutes, this property offers excellent connectivity and a perfect balance of peaceful living and proximity to all that the Costa del Sol has to offer. **Area Highlights:** Elviria is a fantastic location, just 15 minutes from Marbella by car. The local center features grocery stores, restaurants, a pharmacy, and even a monthly organic food market. The beach, considered one of the best near Marbella, is about 1 km downhill. Additional amenities include a nearby restaurant, Greenlife Golf (with a driving range equipped with computer simulations), and several pools within the complex. Its location—90 meters above sea level—avoids issues like sea salt damage and high humidity typical of beachfront properties. **Climate & Accessibility:** Elviria enjoys a unique microclimate, with mild winters (18–20°C during Christmas) and comfortable summers (around 30°C). Malaga Airport is only a 35-minute drive away. Don't miss the chance to experience the luxurious lifestyle of Elviria Hills – a true gem on the Costa del Sol.

---

#### Features:

None, Pool, Air conditioning, Sea views, Mountain views, Private garden, Lift, None, Parking, Luxury