

+34 695 577 651

LW
Estates

info@lw-estates.com

Penthouse in Puerto Banús

Reference: R4992316



Bedrooms: 3

Bathrooms: 3

M²: 166

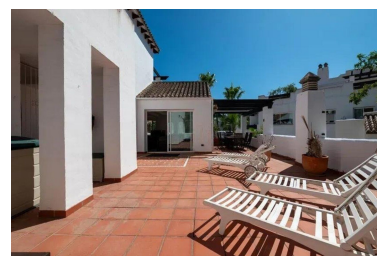
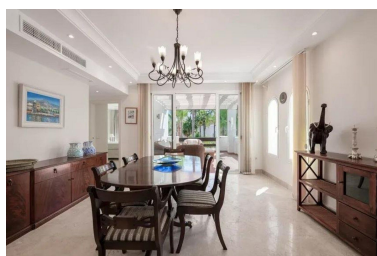
Price: 1,600,000 €

Status: Sale

Property Type: Penthouse

Parking places: by request

Printing day : 27th April
2026





Overview: Located in a prestigious urbanization in the area of Puerto Banus, we present this spectacular duplex offers a privileged lifestyle in a quiet and landscaped environment. Just 5 minutes walk from the beach, 15 minutes from Puerto Banus and very close to the promenade of San Pedro, its location allows you to enjoy the best dining, shopping and services in the area. This luxury apartment is distributed on two floors with spacious and bright spaces designed to enjoy the Mediterranean climate. On the main floor, a large living-dining room gives direct access to two terraces, one of them perfect for creating a barbecue and outdoor dining area. The independent kitchen, fully equipped, has access to the laundry room. It has three bedrooms and three bathrooms, with a comfortable and functional distribution that guarantees privacy and comfort. On the top floor, a private 155 m² solarium offers a unique space to relax, sunbathe or design a chill-out area with unobstructed views. In addition, the property includes parking space and storage room, air conditioning hot / cold and is part of an exclusive community with swimming pool and perfectly manicured gardens. Do not hesitate to request a visit!

Features:

None, Pool, Air conditioning, Lift, None, Private garden, Parking